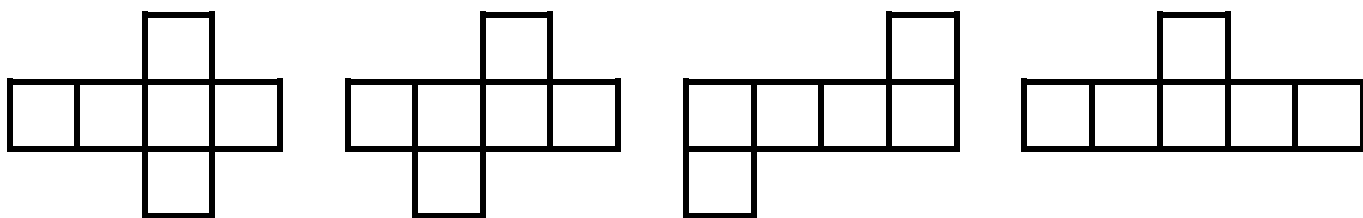
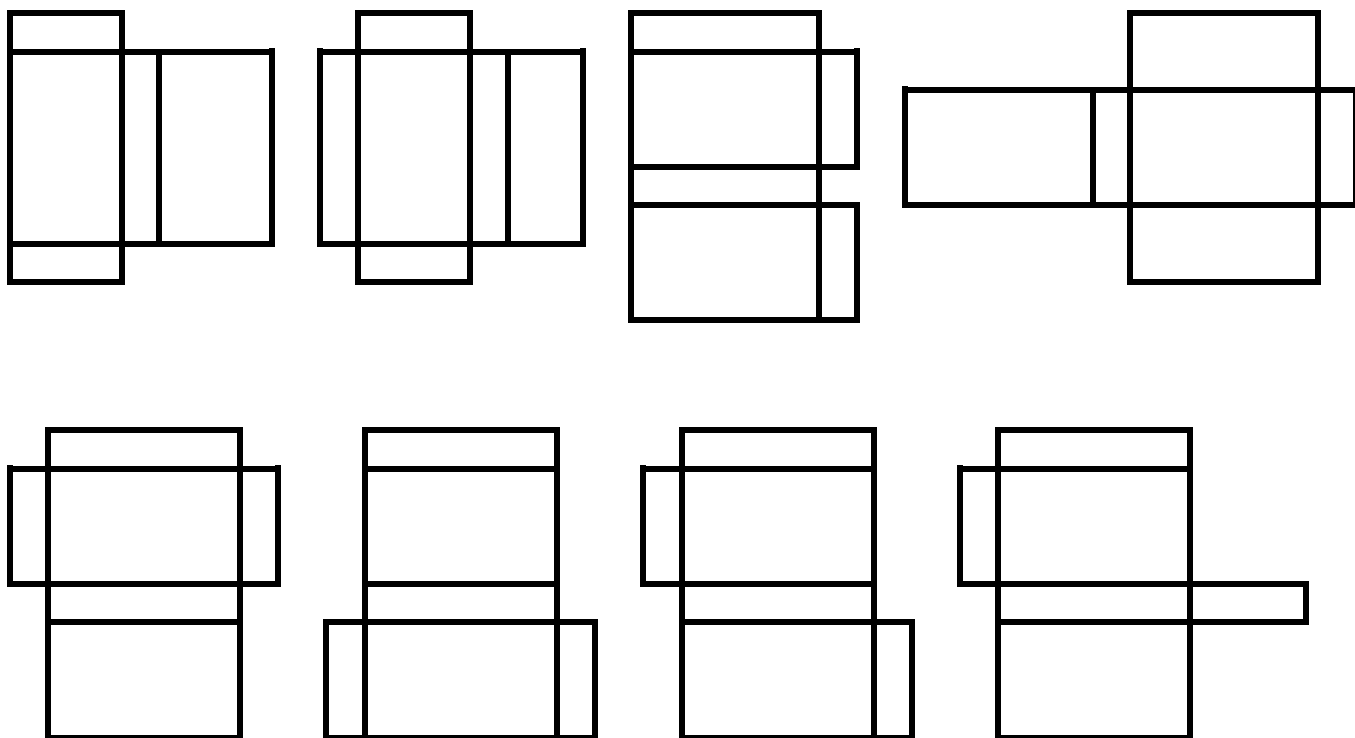


Charnaë is at Hawkeye Corrugated Box Company. The company produces and designs boxes for every kind of product imaginable, from funny looking little boxes to huge boxes big enough to fit a car. You use boxes everyday but probably never stop to think about how they're made. It's all about math. In fact, the construction of boxes relates to a topic in geometry called nets. A net is a two-dimensional figure that can be folded into a three-dimensional shape. Help Charnaë determine which of the patterns below are nets for a box.

**Problem 1:** By visually folding each pattern, determine which of the following patterns are a net for a cube. To verify your answers, cut out and fold the patterns on the following page.

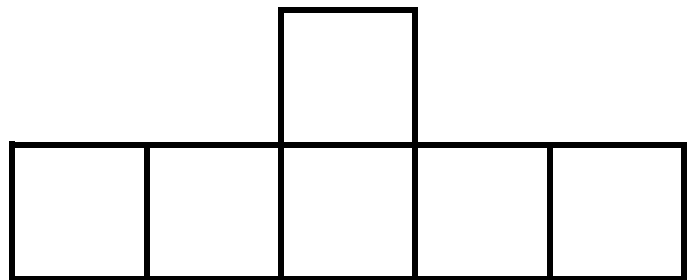
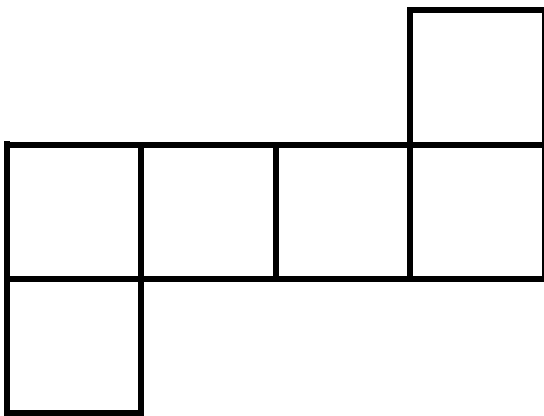
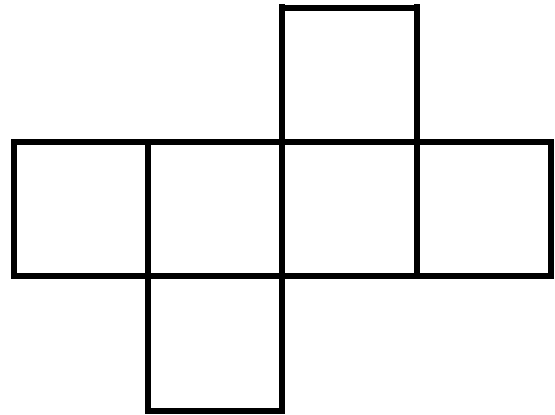
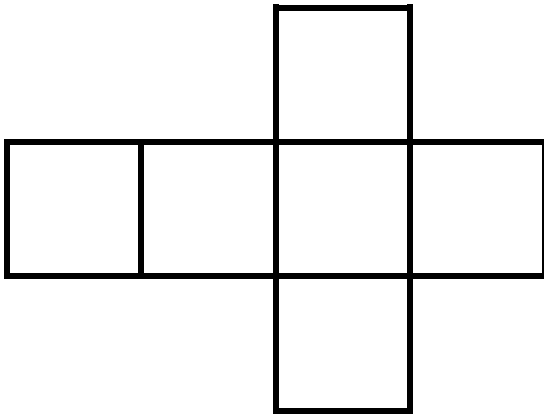


**Problem 2:** By visually folding each pattern, determine which of the following patterns are a net for a rectangular prism. To verify your answers, cut out and fold the patterns on the following pages.



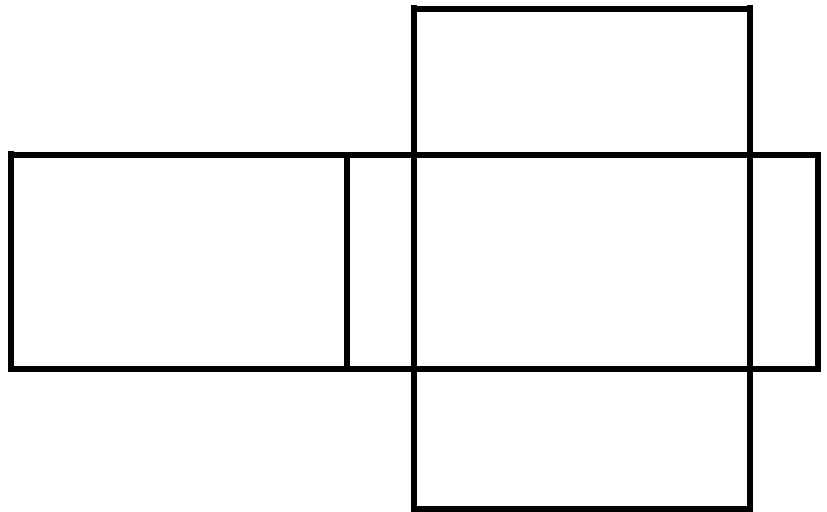
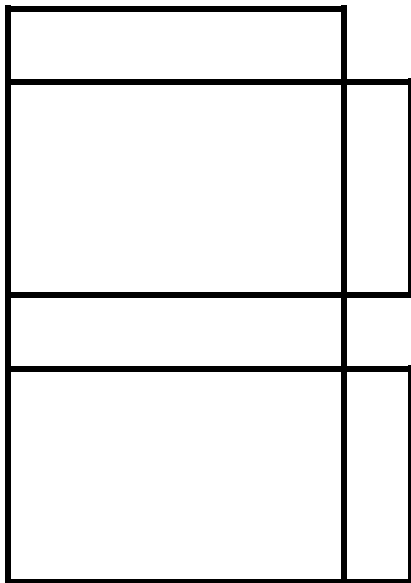
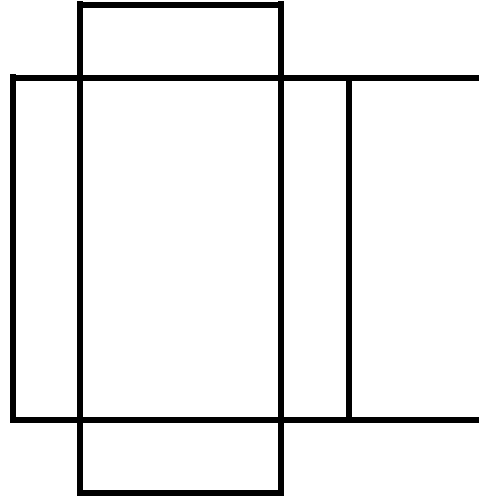
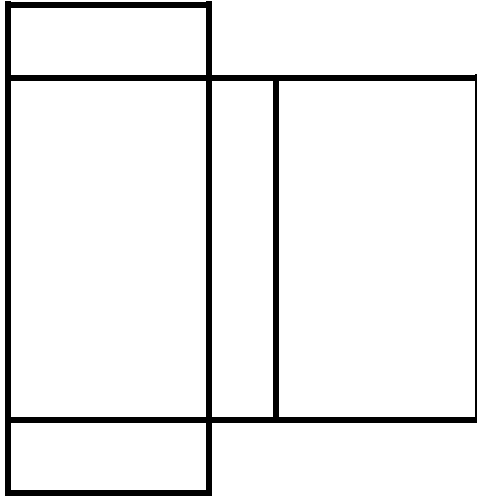
**SOLVED**

MAKING SENSE OF MATHEMATICS



**SOLVED**

MAKING SENSE OF MATHEMATICS



**SOLVED**

MAKING SENSE OF MATHEMATICS

